

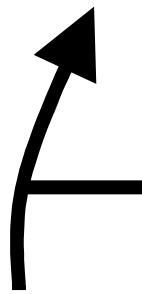
1	Acesso ZE11A (Góis)	
0,00	<div data-bbox="587 232 850 353" style="border: 1px solid black; padding: 2px;"> N 40° 09'359' W 8° 06'597' </div> <div data-bbox="850 232 1169 546" style="text-align: center;"> </div>	CORTEGAÇA CABREIRA SANDINHA CAPELO CANDOSA COLMEAL
0,00	GÓIS	
10,38	<div data-bbox="660 647 1144 775" style="border: 2px solid black; padding: 5px; display: inline-block;"> Sandinha </div>	
10,38		
12,70		<div data-bbox="1182 969 1517 1081" style="border: 2px solid black; padding: 5px; display: inline-block;"> CAPELO </div> <div data-bbox="1217 1151 1482 1272" style="border: 1px solid black; padding: 2px; margin-top: 10px;"> N 40° 09'010' W 8° 02'440' </div>
2,32		
12,86		
0,16		
13,07		ENTRA EM TERRA
0,21		

2

Acesso ZE11A (Góis)

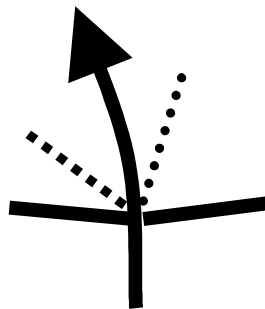
13,18

0,11



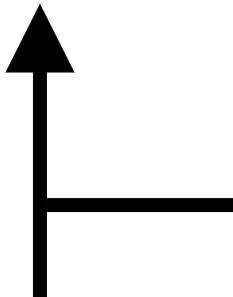
13,55

0,37



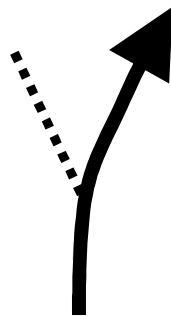
14,26

0,71



15,00

0,74



15,23

0,23

Para a ZE11

Siga as instruções da
GNR e dos Marshals

N 41° 10'072'
W 8° 02'795'